

SS (Salmonella Shigella) Agar

Medium used for the isolation and identification of Salmonella spp. and Shigella spp.

*Equally use with MFDS (MB-S1394K).

• CONTENTS (Liter)

Beef Extract	5.0 g
Proteose Peptone	5.0 g
Lactose	10.0 g
Bile Salt No.3	8.5 g
Sodium Citrate	8.5 g
Sodium Thiosulfate	8.5 g
Ferrous Citrate	1.0 g
Brilliant Green	0.00033 g
Neutral Red	0.025 g
Agar	13.5 g
Final pH = 7.0 ± 0.2 at 25°C	

• PROCEDURE

Suspend 60.03 G of powder in 1 L of distilled or deionized water. Heat to boiling until completely dissolved. DO NOT AUTOCLAVE. Cool to 45 - 50°C in water bath. Mix well. Pour into petri dishes.

• INTERPRETATION

SS (Salmonella Shigella) Agar is a medium used for the isolation and identification of Salmonella spp. and Shigella spp. Beef extract and proteose peptone provide nitrogen, carbon, amino acids, minerals and vitamins. Lactose is a carbohydrate. Bile salt No.3, sodium citrate and brilliant green are the selective agents to inhibit Gram-positive organisms. Sodium thiosulfate and ferrous citrate detect hydrogen sulfide production. Neutral red is a pH indicator. Agar is the solidifying agent.

• TECHNIC

Inoculate the specimen using a sterile loop to the medium. Incubate at 35 - 37°C for 18 - 24 hours. Refer appropriate references for recommended test procedure.

• QUALITY CONTROL FOR USE

Dehydrated medium

Appearance: free-flowing, homogeneous

Color: very light buff to pink

Prepared medium

Appearance: slightly opalescent

Color: red-orange

Incubation conditions: 35 - 37°C / 18 - 24 hours

Microorganism	ATCC	Inoculum CFU	Growth	Characteristics
<i>Salmonella typhimurium</i>	14028	50-100	good	colorless colonies with or without black centers
<i>Shigella flexneri</i>	12022	50-100	good	colorless colonies
<i>Escherichia coli</i>	25922	≥10 ³	partially inhibited	pink to red colonies
<i>Enterococcus faecalis</i>	29212	≥10 ³	inhibited	-
<i>Staphylococcus aureus</i>	25923	≥10 ³	inhibited	-

• STORE

The powder is very hygroscopic. Store the powder at room temperature, in a dry environment, in its original container tightly closed and use it before the expiry date on the label. Store prepared medium at 2 - 8°C.

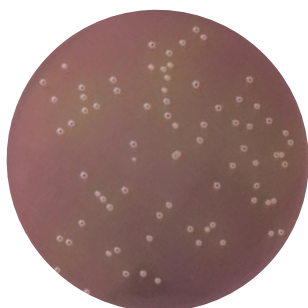
• REFERENCES

1. Gray L.D. (1995). Escherichia, Salmonella, Shigella and Yersinia, p. 450- 456. In Manual of clinical microbiology, 6th ed. American society of microbiology.
2. Leifson E. (1935). J. Pathol. Bacteriol. 40: 581.
3. Rose, H.M., and M.H. Kolodny (1942). J. Lab. Clin. Med. 27: 1081-1083.
4. Refer to the MFDS.

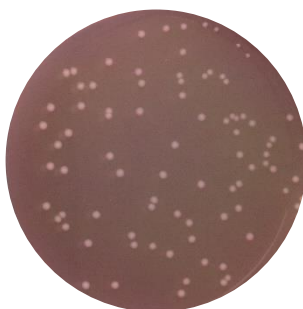
• PACKAGE

Cat. No : MB-S1394 SS (Salmonella Shigella) Agar	500 G
---	-------

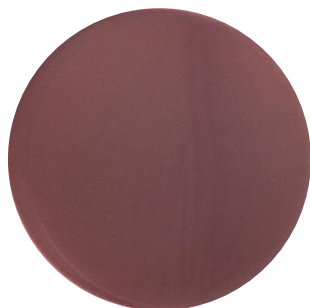
• MICROBIAL CULTURE IMAGES



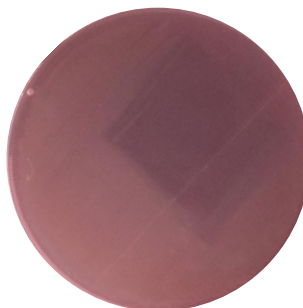
Salmonella typhimurium
ATCC 14028



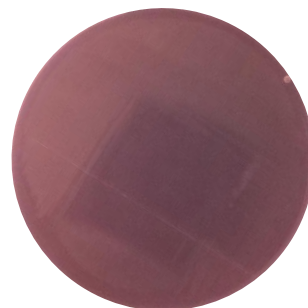
Shigella flexneri
ATCC 12022



Escherichia coli
ATCC 25922



Enterococcus faecalis
ATCC 29212



Staphylococcus aureus
ATCC 25923

Incubation conditions : 35 - 37°C / 18 - 24 hours